

**246 COSTA MESA CLOSE NE**

MAIN - 526.15 Sq.ft. / 48.87 m2

UPPER - 554.76 Sq.ft. / 51.53 m2

RMS TOTAL - 1080.91 Sq.ft. / 100.41 m2

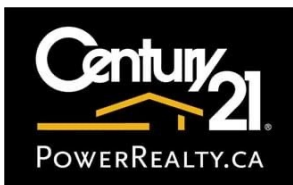
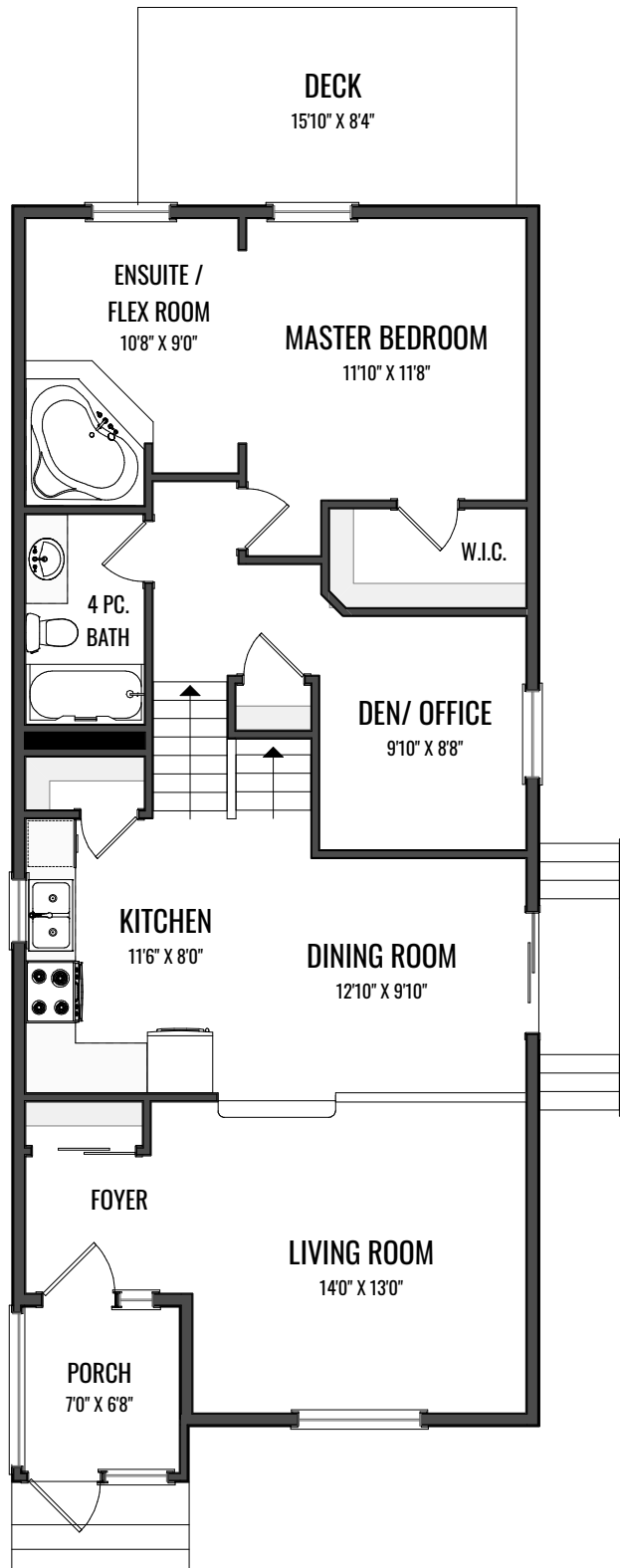
LOWER - 532.33 Sq.ft. / 49.45 m2

BASEMENT - 535.58 Sq.ft. / 49.75 m2

DETACHED SINGLE FAMILY

\*RECA RMS MEASUREMENTS TAKEN  
TO EXTERIOR OF FOUNDATION

SERGHEI CICALA  
CENTURY 21 POWER REALTY  
JULY 27, 2020



**246 COSTA MESA CLOSE NE**

MAIN - 526.15 Sq.ft. / 48.87 m2

UPPER - 554.76 Sq.ft. / 51.53 m2

RMS TOTAL - 1080.91 Sq.ft. / 100.41 m2

LOWER - 532.33 Sq.ft. / 49.45 m2

BASEMENT - 535.58 Sq.ft. / 49.75 m2

DETACHED SINGLE FAMILY

\*RECA RMS MEASUREMENTS TAKEN  
TO EXTERIOR OF FOUNDATION

SERGHEI CICALA

CENTURY 21 POWER REALTY

JULY 27, 2020

